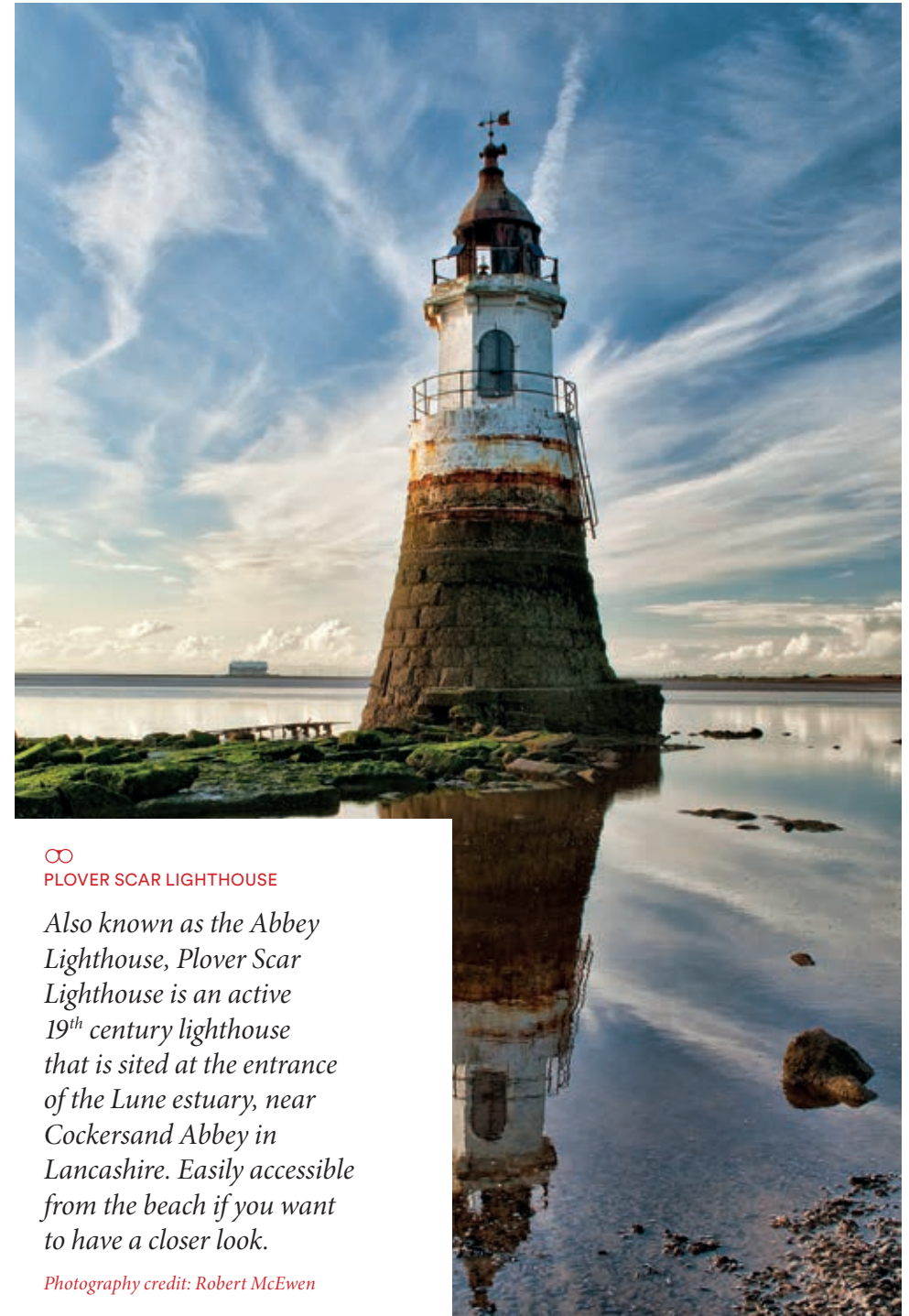


CONTENTS

TEA ROOMS, CAFES, AND FISH & CHIP RESTAURANTS

Arnside Chip Shop and the Big Chip Café	8–9
RSPB Leighton Moss Café	12–13
Greenlands Farm Village	14–15
Countrystyle Meats Farm Shop	18–19
Bridge House Farm	20–21
Pilling Pottery	22–23
The Fish House	26
St. Annes Fish Restaurant	27
The Courtyard Caffé	28–29
Light Ash Farm	30–31
Garstang Fish and Chip Shop	34–35
Cobble Hey Farm and Gardens	36–37
The Potting Shed	38–39
The Café at Stydd Gardens	42–43
The Bobbin Café	46
Greendale View	47
Holden Clough Nursery and The Garden Kitchen	48–49
Riverbank Tearooms	52
Be A Garden Maker Nectar Tearoom	54–55
Town End Farm	58–59
Goat Gap Café	60–61
Embleys Nurseries – The Archers Restaurant and Coffee Shop	64–65
The Old Corn Mill and Village Pantry	66–67
Heskin Farmers Market and Craft Centre	68–69
Scarisbrick Marina and Tearoom	72–73
The Farm Burscough	76–77
Inglenook Farm Café	78–79
Poppins Tearooms	82
Fresh Café	83
Park Farm Shop and Tearoom	84–85
Holden Wood Antiques and Tearoom	88–89
Toffalis Fish and Chip Shop	90
The Bridge Fish and Chip Shop	91
The Co-operative Deli	92
Rebecca's Café	93
Mr Thomas's Fish and Chip Shop	96
Betty's Fish and Chip Shop	97
The Limekiln Café	98–99
RECIPES	103
VOUCHERS	116
INDEX AND MAP	128



∞ PLOVER SCAR LIGHTHOUSE

Also known as the Abbey Lighthouse, Plover Scar Lighthouse is an active 19th century lighthouse that is sited at the entrance of the Lune estuary, near Cockersand Abbey in Lancashire. Easily accessible from the beach if you want to have a closer look.

Photography credit: Robert McEwen

RSPB Leighton Moss Café

Silverdale

The RSPB at Leighton Moss has been established for over 50 years, and has the largest reedbed in northwest England. It is therefore home to many marsh dwelling species. Bearded tits and marsh harriers can be seen all year round, making seasonal appearances are bitterns and avocets. There are many trails and walks around the reserve, if you're lucky you may see an otter or a deer along the way.

The café, situated within the converted barn, and has a colourful light and inviting feel. The breakfast menus is served from 9.30am until 11.30am, followed by lunch where a selection of wraps, paninis, sandwiches and baked potato are available, along with daily specials and cakes. All the food is locally sourced, seasonal and free range where possible. There is also the gift shop in the visitors centre.

 **Opening times:**

Café and shop
9.30am—5pm (closing at 4.30pm
in December and January)

 **Address and contact details:**

Myers Farm, Storrs Lane,
Silverdale, LA5 0SW
Telephone: 01524 701 601
www.rspb.org.uk

 **Directions:**

Take M6 north, at J35 take A601/
A6 to Carnforth, then follow signs
for Milnthorpe. Continue on A6
north you will pick up brown
tourist signs for the reserve.



“We always make a point of calling in at Leighton Moss on our way down from Scotland, not only for the fantastic wildlife, but to have lunch in this outstanding café.”



“Greenlands farm is my favourite place to visit on Sunday lunchtime. Wellies café is great, and the animals are super friendly. The whole place is fab. My 5 year old loves it.”

Greenlands Farm Village

Carnforth

At Greenlands Farm Village there is so much for everyone to enjoy, you will be spoilt for choice. If you fancy a day out with the children there is the fantastic Open Farm which is very hands on with plenty of animals to see and pet, they have a large soft play area called The Play Barn, an outdoor undercover play area, and lots to see and do. There are many retail, gift and culinary outlets on-site. Northern Archery for a forest archery experience (booking advisable), Woodcrest Garden Centre, Fawcetts Country Sport Limited, Woodcock & Snipe, Tammi Upton Hair & Nails, Madam Chocolate, Love Cheesecake, Apricot Whirl and Little Curiosity.

When you need to refuel before continuing your day, you will be welcomed in Wellies café, a place to truly relax with your family and friends, they serve full English breakfast (until 11.30am) with vegetarian and lighter options available. For lunch a large selection of homemade main meals along with sandwiches, salads and pizza. For those seeking that little something extra special, there is The Loft Tearoom which is a gorgeous vintage style setting offering homemade food and delicious fresh homemade cakes, deluxe afternoon teas, with a selection of specialty leaf teas, Barista coffees and luxury hot chocolate. For that special occasion, wine, prosecco or champagne is available, (this can also be hired for any celebrations).

Opening times:

Café

Mon to Sun 10am—5pm

Farm

Mon to Sun 10am—4pm

Admissions

£free to the café and farm shop

Open farm is £6 per person

Play barn is £5 per person

Address and contact details:

Tewitfield, Carnforth,
Lancashire LA6 1JH
Telephone: 01524 784 184
www.greenlandsfarmvillage.co.uk

Directions:

Close to J35 on the M6. From the motorway take the exit signed for Morecambe, Carnforth and Milnthorpe. After ½ mile you come to a roundabout on the A6, take the second exit for Milnthorpe A6. After a further ½ mile at the roundabout take the second exit signed A6070 for Burton in Kendal. After another ½ mile you cross the motorway and the entrance to Greenlands Village is another 300 yards on your left.

Countrystyle Meats Farm Shop

Lancaster

Open 7 days a week Countrystyle Meats Farm shop is a family run business with over 12 years' experience in selling quality meats and produce. With growing interest and demand for their quality produce they have recently expanded their business to include an ice cream parlour and large restaurant.

Passionate about supporting local farmers and auction marts, the sizeable butchers counter offers hand selected cuts of meat which are featured on the restaurant's menu. The Farm shop also offers seasonal fruit & veg, breads and dairy items, jams, chutneys and preserves as well as wines, cheeses, homemade pies and much more. The ice-cream parlour features 24 different flavours of ice cream which is a great treat for both young and old.

With the addition of the restaurant 'Countrystyle Kitchen' customers can now taste the great quality produce sold in the farm shop. The carvery, available 7 days a week, offers cuts of meat roasted to perfection, with a generous range of seasonal veg and all the trimmings (served from 12pm onwards). The carvery runs alongside an extensive à la carte menu which offers an all-day breakfast, fish and chips, and various steaks, along with lighter options including sandwiches, platters, nibbles and homemade soup to name but a few. Countrystyle's afternoon tea has a selection of freshly made finger sandwiches with various fillings, cakes and homemade scones served with jam, clotted cream and Jersey butter. This is accompanied by a selection of fine teas, tisanes or coffee, and for an extra special treat you can add a glass of prosecco or champagne.

🕒 Opening times:

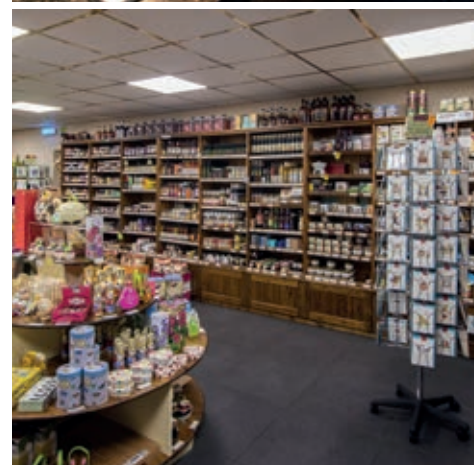
Mon to Sat 8.30am—5.30pm
Sun 10.30am—4.30pm

🏠 Address and contact details:

Lancaster Leisure Park,
Wyresdale Road, Lancaster
LA1 3LA
Telephone: 01524 841 111
www.countrystylemeats.co.uk

📍 Directions:

Follow M6 towards Lancaster, exit at J33 and take the A6 exit to south Lancaster. Continue to follow the A6 for about 7 miles, then turn right onto Hazelrigg Lane, continue for 3 miles then turn right onto Langthwaite Road. Continue for 1 mile then turn left onto Pottery Gardens Street (Lancaster Leisure Park). Countrystyle Meats is on the left hand side.



"We had our tea around 3.30pm there. A really good feed from an excellent carvery served up by Alan. He and his staff make sure you have a great meal and good experience."

The Fish House

Fleetwood

The Fish House is near the dock and freeport in Fleetwood, and therefore ideally situated for high quality fresh fish. This establishment has been both area and regional winner at the national fish and chip awards, and the quality in the fish speaks for itself. With mouth-watering flakes encased in light golden batter, served with fluffy chunky chips and tartar sauce, it is an ideal place for a fish super (gluten free options available).

The restaurant offers everything the takeaway has and more with burgers, baked potatoes and a variety of fish specials, along with hot and cold beverages and traditional steamed puddings. They will even deliver orders to local caravan parks and holiday sites.

They have a second shop which is a takeaway in Poulton called The Fish Hut.

Opening times:

Wed to Sat 11.30am—9pm
Sun 12—7pm
Mon to Tues 11.30am—9pm

Address and contact details:

The Fish House,
172-180 Dock Street, Fleetwood
FY7 6NY
Telephone: 01253 779 229

The Fish Hut,
294A Poulton Road, Fleetwood
FY7 6TF

Directions:

Exit M6 at junction 32, pick up M55 continue for 7 miles. At junction 3, take the A585 exit to Kirkham/Fleetwood continue for 11 miles to Dock Street, Fleetwood.

St. Annes Fish Restaurant

Lytham St. Annes

St. Annes Fish Restaurant, has been in the family since 1928 and as such has a long standing great reputation. The current owner is the 4th generation of fish fryers who worked as a chef at many well-known establishments before taking over the business. As such all the pies pudding and deserts are homemade using only the best local ingredients, with many GF options available.

The licensed dining room has a traditional feel, which is steeped in history through photos on the wall. There is outside seating available and good disabled access to both the restaurant and the takeaway. The restaurant is 800 yards from the sea front where you can relax on the beach, visit the arcade, and stroll round the local shops. It lies just two miles away from the sea side holiday towns of Lytham and Blackpool, if you fancy an extended visit.

Opening times:

Mon to Thurs 11.30am—1.30pm
then 4.30—8pm
Fri to Sat 11.45am—8pm
Sun Closed

Address and contact details:

41 St Andrew's Road South,
Lytham St. Annes FY8 1PZ
Telephone: 01253 723 311
www.stannesfishrestaurant.co.uk

Directions:

Follow the B5233 towards Lytham St. Annes for approximately 1 mile, then turn left onto St. Andrews Road South. St. Annes Fish Restaurant is along this road on the left.



Light Ash Farm

Bilsborrow

Light ash farm is a family run business set in their converted barn, offering wood burning fires to cosy up to in winter and outside seating for those lovely summer days. Situated in beautiful country side near the river Brock, there are scenic views, with plenty of wildlife, and walks around the farm and surrounding public foot paths.

The breakfast menu (served until 11.30am) which runs alongside the main menu offers a hearty full English, with lighter options available. The main menu has a selection of hot and cold sandwiches, salads, and main meals, along with a varied specials board including homemade soups which regularly changes, and are all made with fresh local produce.

For dessert there is an extensive cake range to choose from all homemade on-site, and if you're feeling a little full they are available to take away. Celebration cakes can be made to order for that special occasion, and outside catering provided as well.

Afternoon tea is served from 2pm on a traditional tiered stand with a selection of finger sandwiches, dainty homemade cakes and delicious fresh scones. The farm shop sells fresh local produce, giftware, and haberdashery.

Opening times:

Thurs to Mon 10—4pm

Address and contact details:

St Michael's Road, Bilsborrow,
Preston PR3 0RT
Telephone: 01995 640 068
www.lightashfarmshop.co.uk

Directions:

Follow the A6 from Broughton towards Bilsborrow for 3½ miles. Turn left on to St. Michaels Road. Continue for 1½ miles Light Ash Farm will be signposted on the right hand sign.



In May 2015, Light Ash Farm had the huge honour of serving lunch to Her Royal Highness Queen Elizabeth.


The Potting Shed

Longridge


With a rustic, homely yet quirky feel The Potting Shed is somewhere you can relax and enjoy delightful food. In the summer months you can sit in the roof garden and take in the surrounding countryside.

A full English breakfast is served until 11.30 am along with smoked salmon and scrambled egg, or granola. For lunch a delightful selection of homemade burgers which are a refreshingly healthy change from the norm, with vegetarian and vegan options available. Beautifully indulgent salads both warm and cold bursting with greens, beans and fruits. Wholesome main meals are also served along with the specials board which changes regularly, and a tempting selection of locally made cakes.

The afternoon tea is a beautiful assortment of dainty delights including sandwiches, homemade scones, and cakes all set out on a traditional tiered cake stand, this comes with tea or coffee. And for the more savoury pallet, a picnic basket filled with cheeses, home cooked hams, frittata and much more can be had. Downstairs there is a garden centre, selling shrubs, bedding plants, pots, garden wear and tools. It also has a pretty little shop with ornaments and occasional gifts.

 **Opening times:**
Tue to Sat 10am—5pm

 **Address and contact details:**
Spout Farm Nursery,
140 Preston Road, Longridge,
Preston PR3 3BD
Telephone: 01772 780 590
www.thepottingshedlongridge.co.uk

 **Directions:**
Situated approximately 3 miles
along the B6243 from Preston to
Longridge on the right hand side.



“Went here yesterday for lunch had the ploughman’s and chips to share with a friend. It was excellent wasn’t sure how big it was going to be so we thought we could have a piece of cake after, but didn’t need to worry portion was big enough for both it was delicious. Will definitely be going back with other friends and family.”



∞
PENDLE HILL

Dominating the Forest of Bowland AONB, and standing between the districts of Pendle and Ribble Valley, Pendle Hill's history dates back as far as the Bronze Age as an ancient burial ground was found at the summit.

Photography credit: John Toms

The Café at Stydd Gardens


Ribchester

Stydd Gardens is situated in the ancient Roman town of Ribchester in the beautiful Ribble Valley. This enchanting place has a unique feel that you just can't quite put your finger on. The café bar/tearoom is housed in an enchanting Mediterranean style green house, laid out with climbing grape vines, and shabby chic furnishings it's a truly relaxing atmosphere. All the food at Stydd is made with fresh local produce, combined to bringing invigorating flavours, along with traditional favourites. Breakfast (served 10 until 11am), lunch (served from noon–4.30pm) and the sumptuous Best of British afternoon tea (available between 3.00–4.30pm booking essential).

The gardens at Stydd are beautifully landscaped, inspirational and thought provoking to walk around. Within these grounds there are several small independent businesses, each with its own unique creative style. Boho Kisses Boutique, Pasharah Designs, Lavendula, Maison De Lamond, The Wine Shed, The Bee Garden and Rosie Duck.

 **Opening times:**
Tues to Sun 10.00am—4.30pm

 **Address and contact details:**
Stoneygate Lane, Ribchester,
Preston PR3 3YN
Telephone: 01254 820 120
www.stydd.com

 **Directions:**
Follow the B6245 from Blackburn towards Ribchester for about 4 miles, turn right onto Ribblesdale Road and continue for about ¼ mile then Stydd Gardens will be on the right hand side.



“Set in the beautiful Ribble valley in the Roman village of Ribchester. 1st class views with a 1st class service. Can wait to go back. Thank you everybody for making my visit perfect.”





∞
BROCK BOTTOM

Brock Bottom, also known as Brock Picnic Area, Brock Valley, Brock Mill and Brock Valley Nature Trail, are all different names usually referring to the area along the River Brock, from the picnic spot which is just off Brock Mill Lane, in the Forest of Bowland AONB.

Photography credit: Paul Grogan Photography

Holden Clough Nursery and The Garden Kitchen

Bolton-by-Bowland

Holden Clough Nursery has a warm, friendly and inviting feel, with spacious rooms to dine in and sofas to relax and have a chat on. A hearty gardener's breakfast with lighter options is available from 10.00am–11.15am. They serve a good selection of sandwiches, salads, platters and Paninis along with hot meals too. A good gluten free menu is offered, alongside specials that change daily, and warming homemade soup which is always changing too. Finish off with a tempting selection of homemade desserts, and a range of hot and cold beverages including wines and beers.

The afternoon picnic is a must try. With a variety of miniature savouries and sweets, made in quaint little pots and mini welly boots, all served on a 'miniature picnic table'!

The shop in the entrance has an interesting little selection of sweet treats and dried goods, as well as cooking oils and ornaments. The nursery has a beautiful range of shrubs, bedding plants, and hanging baskets for those of you looking to add a splash of colour to your garden.

🕒 *Opening times:*

Mon to Fri 10.00am—4.30pm
Sat and Sun 9.30—5.30

🏠 *Address and contact details:*

Holden, Bolton-by-Bowland,
Lancashire BB7 4PF
Telephone: 01200 447 447
www.holdencloughnursery.com

📍 *Directions:*

Take the A59 to Sawley, take the Sawley turning onto Sawley Road, turn left at the Spread Eagle, follow this road around to the right continue along this lane (you will pick up signs for Holden Clough). Turn left onto Holden Lane. Holden Clough Nursery and The Garden Kitchen is along this lane on the left.



“Lovely picnic enjoyed by my parents. I had an enjoyable lunch too in a beautiful setting. It was a gorgeous sunny afternoon with some beautiful flowers and plants on display.”



“Been in twice this week already, can’t praise the café enough. Great coffee and a delicious flat white... food was great too. Just a walk away from home... think it could become my second office.”



Goat Gap Café

Newby

The newly renovated Goat Gap Café has a relaxed, open plan, and stylish feel, and the fresh food theme is at the heart of this establishment with fresh herbs on every table. The menu is an eclectic mix of fresh flavours and simple classics, they have fantastic deli salads served with homemade flatbreads or sourdough, flavoursome main meals full of quality, fresh local produce, and tempting homemade cakes. These can be enjoyed while taking in the views of the Forest of Bowland through the large arch windows.

The Goat Gap Café is at the foot of Ingleborough which features in the three peaks challenge along with Whernside and Pen-Y-Ghent. Its location in front of this majestic giant makes it the ideal starting point or end point for many walks, and has inspired local artist Phillip Corps, whose art work hangs in the café. Being situated directly on the A65 also makes it a popular rest stop for cyclists, and motorists alike, traveling between the Lake District and the Yorkshire Dales.

Opening times:

Mon to Fri 8am—5pm
Sat to Sun 9am—5pm

Address and contact details:

Henbusk Lane, Newby,
Carnforth LA2 8HS
hello@goatgapcafe.co.uk
www.goatgapcafe.co.uk

Directions:

Situated on the A65 between Clapham and Ingleton, the Goat Gap Café is about 1 mile from Clapham.





∞
INGLEBOROUGH MOUNTAIN

The Ingleton Mountain trail is located 8 minutes up the A65 from the Goat Gap Café and offers a well-known circular walk beginning and ending in the village of Ingleton.

Photography credit: Robert McEwen



Embleys Nurseries

The Arches Restaurant and Coffee Shop

Much Hoole

The Arches Restaurant and Coffee Shop at Embleys is a fully licensed restaurant with fresh and inviting style. They serve a hearty full English breakfast, along with lighter options including eggs benedict, and homemade scones (available until 11.30am). For lunch a good selection of sandwiches and lighter bites is available all served with homemade crisps. A mouth-watering selection of wholesome main meals, along with daily specials and homemade soup which change regularly. To finish there is a delicious choice of puddings, cakes and tarts.

The afternoon tea is a wonderful platter of fresh sandwiches, dainty savouries, and tempting homemade cakes, served with tea or coffee. In the nursery they have an extensive range of shrubs, bedding plants, fruit trees and roses, along with many of the tools, furniture and gardening equipment you need, to create your ideal outdoor space.

Opening times:

Nursery

Mon to Sat 9am—5pm
Sun 10am—4pm

Archers

Mon to Sat 9am—4.30pm
Sun 10am—3pm

Address and contact details:

Liverpool Road, Much Hoole,
Preston, Lancashire, PR4 4RL

Telephone numbers:

Nurseries 01772 612 227
The Arches 01772 396 081
www.embleynurseries.co.uk

Directions:

Embleys Nurseries is around 2 miles out of Longton on the A59 between Preston and Southport.



“Just popped in on my way home and had just a sandwich and tea. It was one of the best cheese and chutney sandwiches that I’ve had for years and at a reasonable cost. Definitely worth the visit.”



“Beautiful location. Tea room immaculately clean. Staff very friendly. Plenty of variety on the main menu and daily specials in addition. Food absolutely delicious. Will definitely be returning.”

Scarisbrick Marina and Tearoom

Scarisbrick

The family run marina and tearoom, is set in beautiful countryside between Southport and Ormskirk. As such there is direct access to the Leeds Liverpool canal paths, and lovely walks within the area. The tearoom is situated in front of the jetties of the marina, with both indoor and outside seating available to admire the boats from. Inside the tearoom is a curiosity corner selling small antiques and supplies.

The serve a hearty boaters’ breakfast with lighter options available (until 11.30am). Lunch is a selection of traditional wholesome, homemade Lancashire favourites, along with sandwiches, burgers and salads. There is a specials board which regularly changes, including homemade soup of the day, and to satisfy your sweet tooth, there is a good selection of cakes and puddings, which can be enjoyed with tea, coffee or a soft drink including a range of Fentimans beverages.

Opening times:

Mon to Sun 9am—4pm
(cake and drinks only after 3pm)
Closed Monday except
Bank Holidays
Last orders in the Tearoom 4pm

Address and contact details:

Southport Road, Scarisbrick,
Ormskirk L40 8HQ
Telephone: 01704 841 924
www.scarisbrickmarina.com

Directions:

From M6 take J26 towards M58 Skelmersdale/Southport, follow for 5 miles. Exit J3 take A570 exit, follow A570 for 7 miles. The marina will be on the left hand side.

The new marina is located to the west of Scarisbrick Bridge 27A on the A570 Southport Road in Scarisbrick.





∞
SCARISBRICK MARINA

The Leeds and Liverpool Canal is a canal in Northern England, linking the cities of Leeds and Liverpool. The first section of the canal opened from Bingley to Skipton in 1773, and the final section in Bridgewater was completed around 1816. The main cargo at this time would have been coal.

Photography credit: Victoria Greenwood

The Farm Burscough

Burscough

The Farm Burscough is set in rural countryside that lies between Southport and Ormskirk, with Liverpool just a short drive away, making it the ideal place to take a short break. In the century renovated barn 4 star B&B accommodation is available in 3 twin/double rooms with ensuite bathrooms. They have a large camping and caravan site and a camping pod new for 2017, along with shower and toilet facilities.

With The Farm lying in the countryside and backing onto the Leeds Liverpool canal there are plenty of walks to enjoy around the farm and surroundings. Whether staying as a guest or just enjoying one of the many walks, you will find plenty of freshly prepared wholesome food in The Farm's licensed tearoom. A hearty all day breakfast can be had made with their own free range eggs, local bacon and sausage. There are vegetarian and lighter options available. A good selection of traditional lunches are served using vegetables grown on the farm or locally sourced produce. In the farm shop they stock essentials for campers, homemade cakes, pies and chutneys, alongside local, meats, dairy, beers and crisps. There is also Ruby Raggins gift and craft shop, a salon Beauty by Tanya Louise, and J9'K9 dog grooming service.

🕒 *Opening times:*

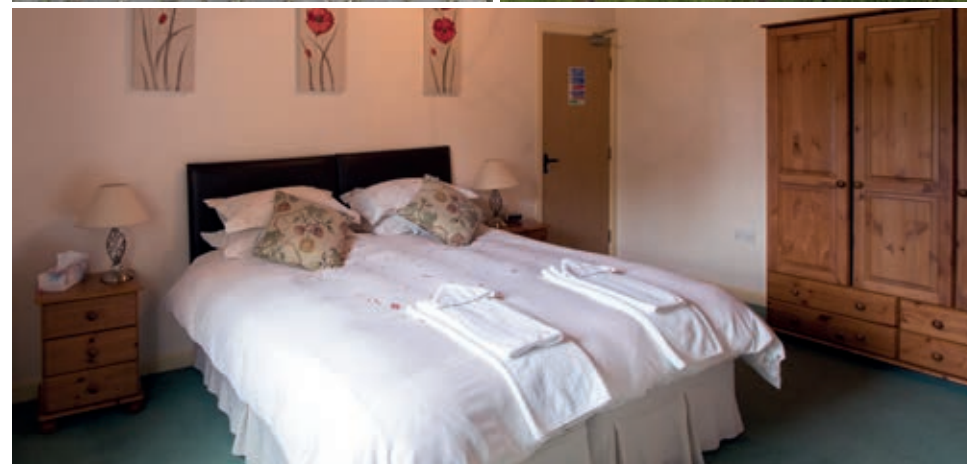
Mon to Sat 9am—4pm
Sun 10am—4pm
(last hot food orders 3.30pm)

🏠 *Address and contact details:*

71 Martin Lane, Burscough,
Lancashire L40 0RT
Telephone: 01704 894 889
www.thefarmburscough.co.uk

📍 *Directions:*

From the M6 exit at J27 and pick up A5209 Wigan/Parbold. Continue for 3 miles then turn right on to A59. Continue for ½ mile and turn left onto Higgins Lane, then continue for about 1 mile. Turn left onto Gorst Lane and continue for another mile you will see sign for The Farm Burscough.



“I have had the pleasure of visiting on many occasions and I have to say that I am never disappointed. On our most recent visit we had an afternoon tea which was a delight. A fabulous selection of sandwiches and cakes. The staff are so friendly, helpful and welcoming.”

Park Farm Shop and Tearoom

Walmersley (near Ramsbottom)

This family-run licensed tearoom has traditional 120-seater dining area. It serves wholesome, homemade delicious food in a homely and comfortable setting. They serve anything from sandwiched to five course meals and ensure you will be impressed with mouth-watering food they offer. The extensive food and drinks menu also includes some very good diabetic, gluten-free and vegetarian options. Also available is afternoon tea, with homemade cakes served on fine bone china.

The farm shop sells their own dairy produce along with other locally sourced fresh fruit and vegetables, meats, cheese, juice, jam and chutney. There is a selection of homemade ready-to-eat meals, breads, pasties and pies, with a variety of cakes and puddings. This peaceful venue is an equally popular location for business lunches as well as for workmen's brunches, with wellington boots as acceptable as a suit and tie.

🕒 *Opening times:*

Tue to Sun 9am—4pm
(drinks only after 3pm)

🏠 *Address and contact details:*

Park Farm, Walmersley,
Lancashire BL9 5NP
Telephone: 01706 823 584
www.parkfarmshopramsbottom.co.uk

📍 *Directions:*

Situated on the A56 from Edenfield to Bury, Park Farm is through Shuttleworth on the left hand side.



"Just had lunch at Park Farm, wonderful as usual would have had a cocktail if not driving!"



∞
EAST LANCASHIRE RAILWAY

The East Lancashire railway operated from 1844–1959 and connected town and cities including Liverpool, Manchester and Blackburn. Now run as a heritage line it host many steam and diesel events and various themed days and excursions.

Photography credit: Paul Grogan Photography

The Limekiln Café

Uppermill

One of the most alluring features of the Limekiln has to be the heated veranda overlooking the Leeds Liverpool canal. On a nice day you can sit and watch canal boats passing through the lock under the viaduct, and if it's a little chill there are blankets to snuggle into. The breakfast fayre can be light and fresh with organic granola or smoothie, through to a full English (and vegetarian full English) there's sure to be something for everyone. The lunch menu has a tempting selection of hot and cold sandwiches, platters for sharing, and mouth-watering daily specials.

Afternoon tea is also available, dainty sandwiches, homemade scones and mini cakes served with award winning loose leaf tea, coffee or prosecco. They also host monthly themed Friday and Saturday night supper clubs, with a different foodie theme for each month.

 **Opening times:**

Mon to Sun 9am—7pm
Breakfast until 11.30 weekdays,
all day Sat and Sun

 **Address and contact details:**

Brownhill Visitor Centre,
Wool Road, Dobcross,
Saddleworth OL3 5PB
Telephone: 01457 871 051
www.thelimekilncafe.com

 **Directions:**

Take the A669 from Oldham towards Huddersfield, continue onto A670 follow this for about 1½ miles, the Limekiln Café will be on the left hand side.



“Beautiful Café, wonderful food with extensive menu and friendly staff. Lovely to be able to sit outside having something to eat and watching the geese and world go by on the canal. An absolute gem.”



∞
MEDIA CITY, SALFORD QUAYS

A favourite tourist hotspot is Media City at Salford Quays. Connected to Manchester via the Metrolink tram system, it is home to ITV, the BBC, the Lowry Arts Centre and Theatre, the Imperial War Museum North and the Lowry Outlet Village.

Photography credit: Paul Grogan Photography

YOUR VOUCHERS

Dining in all of these cafés will be an enjoyable experience on any occasion. The use of fresh local produce, seasonal menus, and amazing desserts, ensures each visit is never quite the same.

Please use these vouchers at any of the cafés featured in the book, and enjoy dining for a little less.

Café Culture



SAVE £2.00
OFF YOUR BILL WITH
THIS VOUCHER
WHEN YOU SPEND
£15 OR MORE



SAVE £2.00
OFF YOUR BILL WITH
THIS VOUCHER
WHEN YOU SPEND
£15 OR MORE



SAVE £2.00
OFF YOUR BILL WITH
THIS VOUCHER
WHEN YOU SPEND
£15 OR MORE



SAVE £2.00
OFF YOUR BILL WITH
THIS VOUCHER
WHEN YOU SPEND
£15 OR MORE



SAVE £2.00
OFF YOUR BILL WITH
THIS VOUCHER
WHEN YOU SPEND
£15 OR MORE



SAVE £2.00
OFF YOUR BILL WITH
THIS VOUCHER
WHEN YOU SPEND
£15 OR MORE



SAVE £2.00
OFF YOUR BILL WITH
THIS VOUCHER
WHEN YOU SPEND
£15 OR MORE



SAVE £2.00
OFF YOUR BILL WITH
THIS VOUCHER
WHEN YOU SPEND
£15 OR MORE



SAVE £2.00
OFF YOUR BILL WITH
THIS VOUCHER
WHEN YOU SPEND
£15 OR MORE



SAVE £2.00
OFF YOUR BILL WITH
THIS VOUCHER
WHEN YOU SPEND
£15 OR MORE